



## Polyx Memory Display

344163

### Description

2 WIRE wall mounted speaker phone video handset with audio and video memory. With 3.5" colour LCD display with PC customisable icons OSD navigation menu for the management of the following MY HOME applications: Video door entry system, temperature control, sound system, scenarios, burglar alarm. With video door entry system answering machine with call memory function.

LED signalling for: call exclusion, door status, connection with entrance panel, and answering machine status. It can be wall mounted using the appropriate bracket (supplied).

Programming and configuration using the TiPolyxMemoryDisplay software supplied with the product.

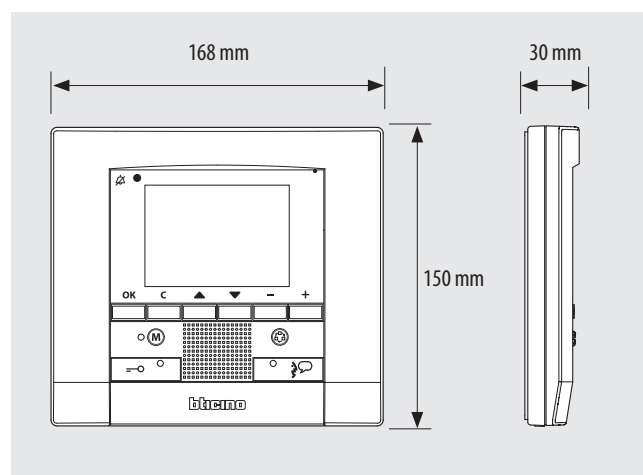
### Related items

346020 (additional 2 DIN modules power supply) - optional, for local powering of the video handset, when maximum installation distances are necessary.

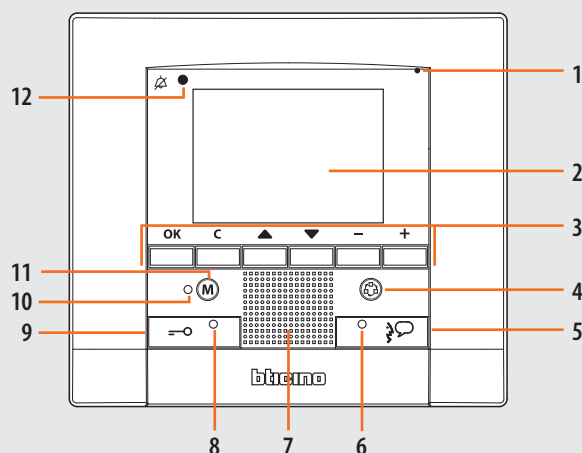
### Technical data

Power supply from SCS BUS:	18 – 27 Vdc
Stand-by absorption:	10 mA
Max. operating absorption:	330 mA
Operating temperature:	0 - 40 °C

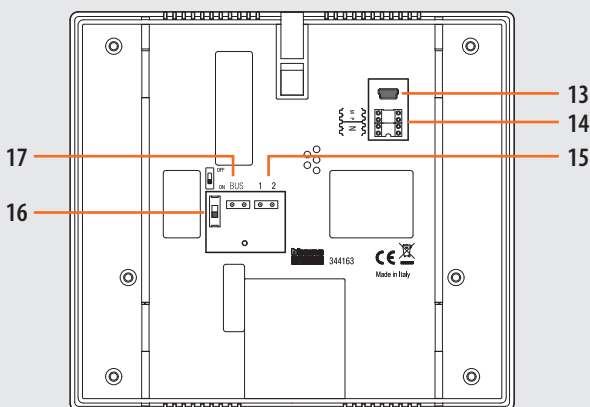
### Dimensional data



Front view



Back view



### Legend

1. Microphone
2. 3.5" LCD colour display
3. Navigation and confirmation keys in the icon menu
4. Entrance panel/camera scrolling activation key
5. Audio connection activation/deactivation key
6. Connection status LED
7. Loudspeaker
8. Door lock status LED
9. Door lock activation key
10. Audio video answering machine status LED
11. Answering machine key: enable/disable the answering machine function (if enabled by the menu)
12. Bell exclusion notification LED
13. Mini USB connector for connection to the PC
14. Configurator socket
15. Additional power supply connector (1-2)
16. Line termination ON/OFF micro-switch
17. 2 WIRE SCS/BUS connection

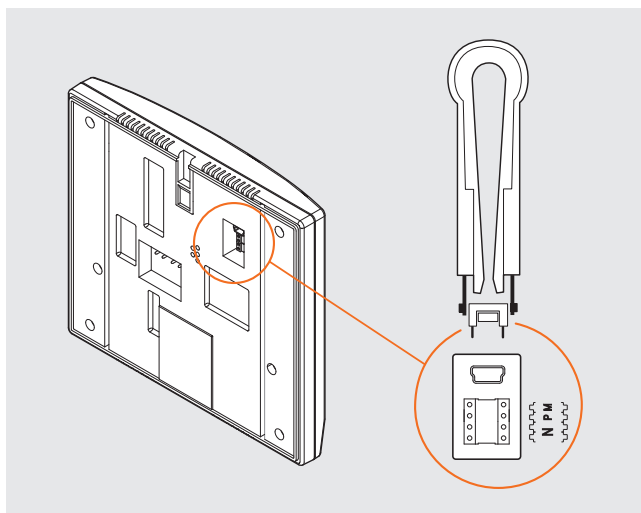
## Configuration

Polyx Memory Display can be configured in two different modes:

- **Quick configuration** (with physical configurator connection);
- **Advanced configuration** (using the TiPolyxMemoryDisplay software supplied).

The quick configuration enables the user to access the video door entry system function menu. This is the standard configuration with configurators to be connected to their own housing on the back of the device itself.



If the apartment interface, item 346850, is installed inside the apartment, configuration of the video handset using the software supplied is recommended.



### N – handset number

The N configurator assigns to each video handset an identification number within the system. The handsets must be configured in progressive order. Handsets with parallel connection (max 3 are allowed inside apartments without item 346850) must be configured using the same N configurator. In parallel with the main video handset, additional handsets, video handsets and/or bells may be installed.

### P – entrance panel association

The P configurator identifies the entrance panel associated, or the first entrance panel to activate before pressing the key  and which door lock is activated when the key  is pressed while the video handset is idle.

### M – operating mode

The M configurator identifies the main menu page and therefore the preset functions that may be used (see manual supplied with the product).

The PC advanced configuration using the software (CD supplied), provides the user with the highest degree of customisation, with the possibility of:

- create customized menus;
- customize text messages;
- access all home automation functions.

### Connection to the PC

To transfer the configuration performed using the TiPolyxMemoryDisplay software or to update the firmware, connect POLYX MEMORY DISPLAY to the PC using the USB-miniUSB cable.

