

TiAxolutedisplay User manual

Axolute Video Display configuration software



CONTENTS

1. Hardware and Software requirements	Pag. 4
2. Installation	Pag. 4
3. Fundamental concepts	Pag. 8
3.1 General push buttons to select the functions	Pag. 8
3.2 New design	Pag.10
3.3 Open design	Pag.11
3.4 Receive the configuration	Pag.13
3.5 Update firmware	Pag.14
3.6 Selecting the software language	Pag.15
3.7 Connecting the Axolute Video Display to a PC	Pag.16
4. New design	Pag. 17
4.1 The first page	Pag. 17
4.2 The Elements available area	Pag. 18
4.3 The Display area	Pag. 19
4.4 The Element property area	Pag. 20
5. Design creation procedure	Pag. 21
6. Importing files exported from TiAxolutedisplay into Microsoft Excel®	Pag. 27

1. Hardware and Software requirements



Caution: the TiAxolutedisplay program is the fundamental tool for configuring the Axolute Video Display. The content of this program is the subject of exclusive Bticino SpA rights.

Hardware requirements

- Personal Computer with Pentium processor >400 MHz.
- 128 MB of RAM memory.
- SVGA graphic card with 800x600 resolution.
- CD-ROM reader.
- Mouse.

Software requirements

- Windows 2000 or XP, Internet Explorer 5.5 or higher.

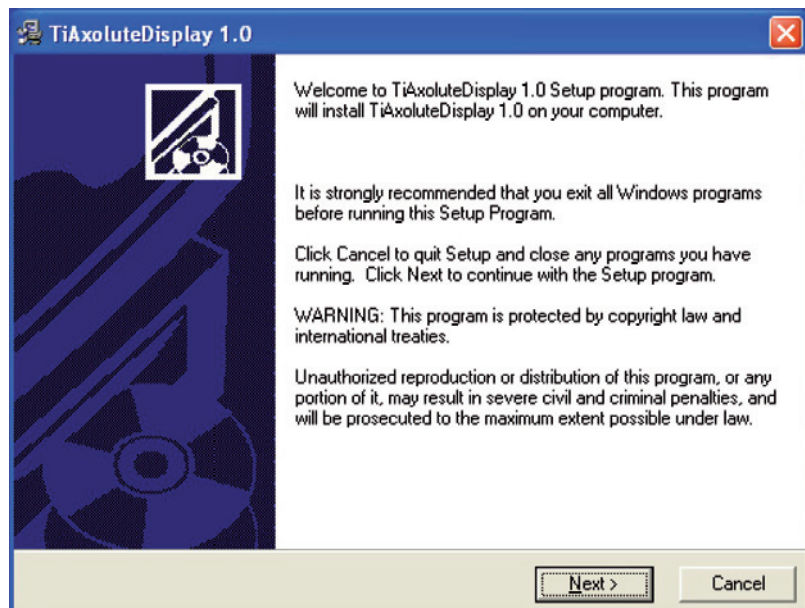
2. Installation

To install the TiAxolutedisplay program proceed as described:

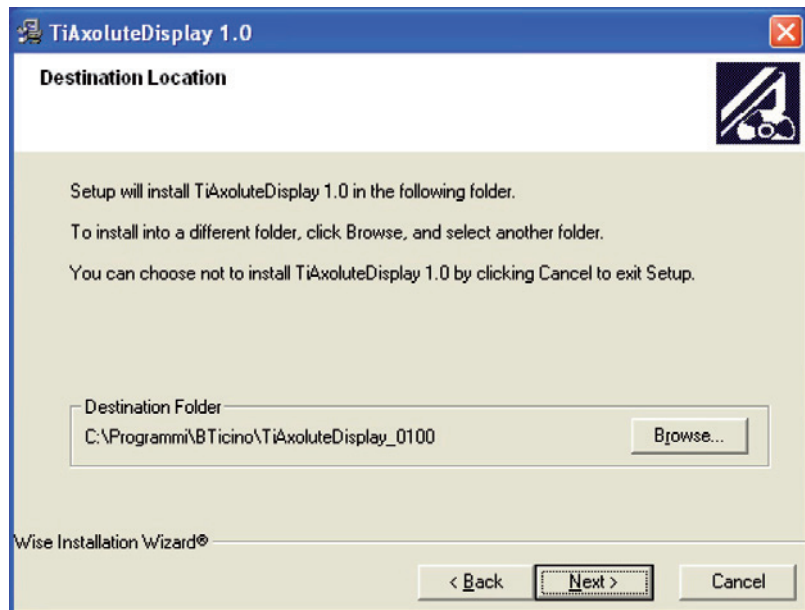
1. Put the CD-Rom in its drive.
2. After the main page is displayed in the web format select "Install TiAxolutedisplay".
3. At this point the installation program will copy the system files needed to run the TiAxolutedisplay program.

On confirming the operations as required the next screens are displayed.

The first screen which appears contains tips for installations and warnings about copyright law



Click on the **Next** push button

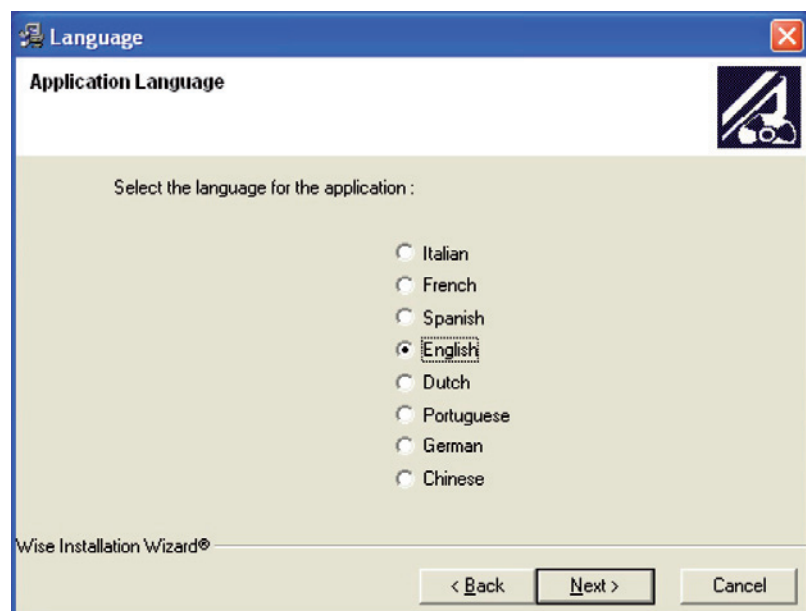


Click on the **Next** push button to install the program in the predefined directory "C:\Program Files\Bticino\TiAxolutedisplay_0100".

Or:

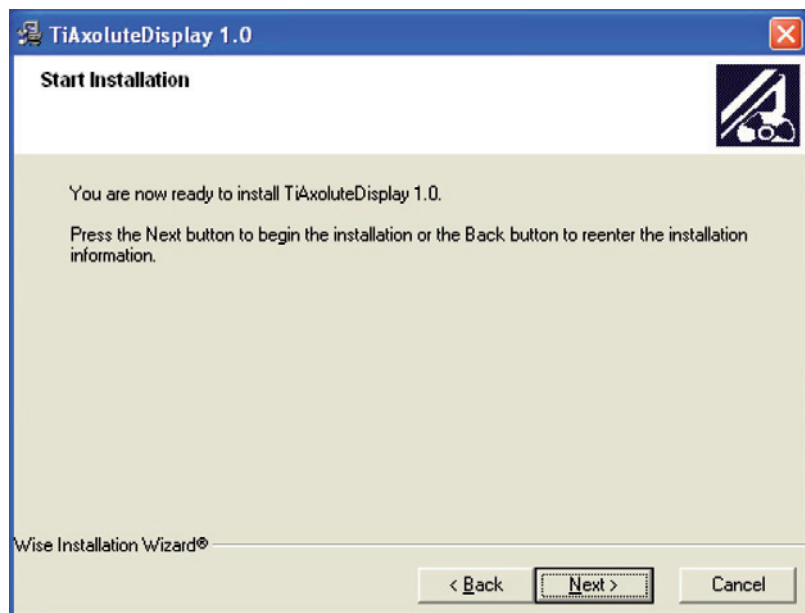
Click on the **Browse** push button to select the path required, and then click on **Next**.

Clicking on **Next** proposes the screen where the TiAxolutedisplay program language can be selected.



Select the language and click on **Next**

Before starting the installation the request for confirmation appears

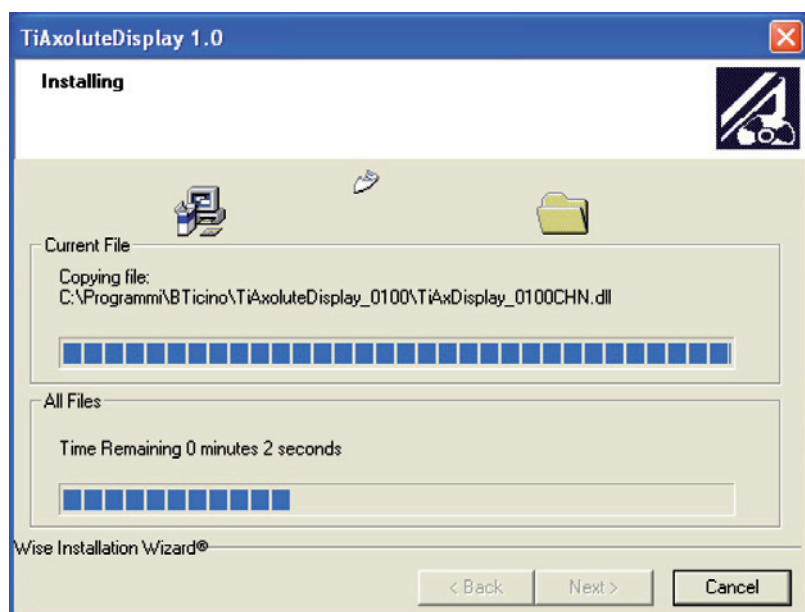


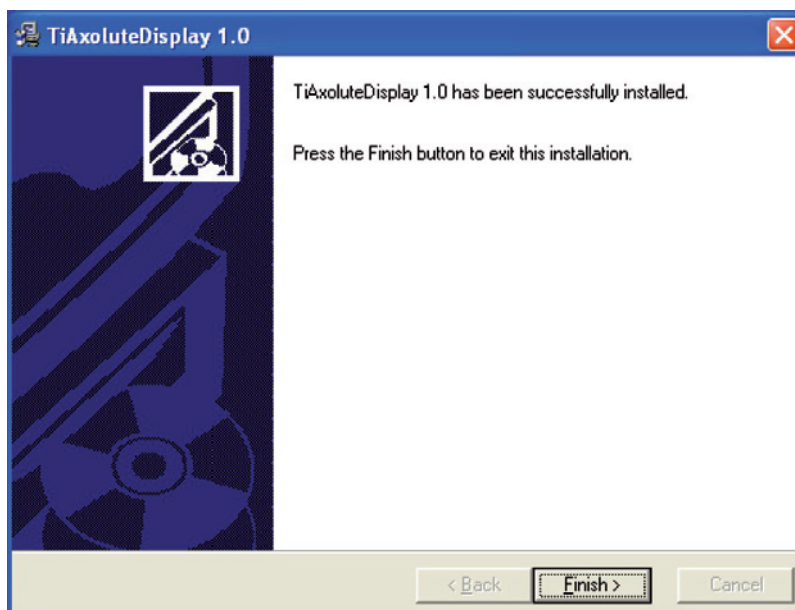
Click on the **Next** push button if you are ready to install TiAxolutedisplay.

Or:

Click on the **Back** push button to return to the previous screen.

The program installation now starts:





Click on the **Finish** push button to end the procedure;

Depending on the settings of the operating system being used it may be necessary to start the system again.

3. Fundamental concepts



Caution: for the software to work correctly the device must be installed as indicated in the installation manual which comes with it.

The TiAxolutedisplay software lets you configure the Axolute Video Display. Depending on the installer and user's needs you can start with a new design or edit an existing one. In this manual all the examples refer to a "new design".

To create a new design

- Run TiAxolutedisplay.
- Make a new design.
- Send the data to the Axolute Video Display

To edit an existing design

- Receive the current configuration data from the device.
- Make any modifications.
- Send the data of the design made to the Axolute Video Display

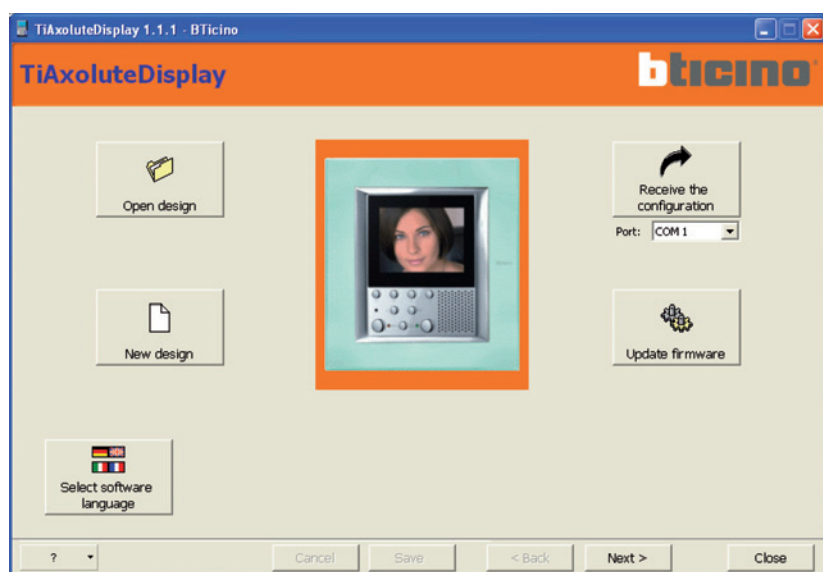
With TiAxolutedisplay you can update the Axolute Video Display firmware version (Add firmware) with new revisions issued by Bticino.

3.1. General push buttons to select the functions

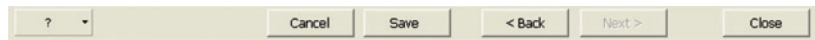
The functions which TiAxolutedisplay can perform:

- New design.
- Open design.
- Receive the configuration.
- Update firmware.
- Select software language.

They can be selected by clicking on the icons in the opening screen.



Navigation bar



The navigation bar, made up of the following commands, can be found at the bottom of every page:

- **Cancel:** can return to the main page. You will be asked to confirm and possibly save the configurations of the current design;
- **Save:** can save the configurations of the current design even if they are incomplete;
- **Back:** returns to the previous page. If you are in the "Home Page Configuration" it will return to the main page after a request for confirmation, because the operation would result in the loss of the configurations;
- **Next:** goes to the next page;
- **Close:** quits the program and if necessary saves the configurations of the current design;
- **?:** supplies information on the software being used:
 - Information on the program name and version
 - Versions supported: indicates the compatibility of the version in use both in relation to previous versions of the same software and with the Axolute Video Display firmware.

When the commands are in grey this means that they are not available in the current page

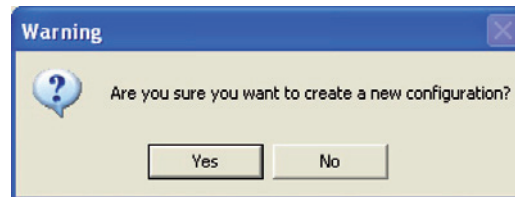
3.2. New design

Note: the operations described in this chapter are also valid for editing an existing design opened with the "Open Design" function.

Can create a new design.

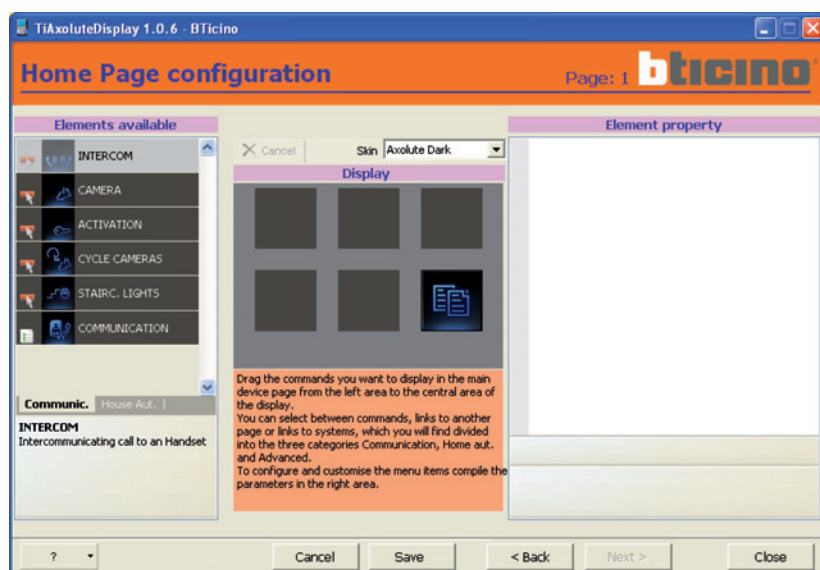
Press the "New Design" key.

Appears:



Click on the **YES** push button

The first design page appears:



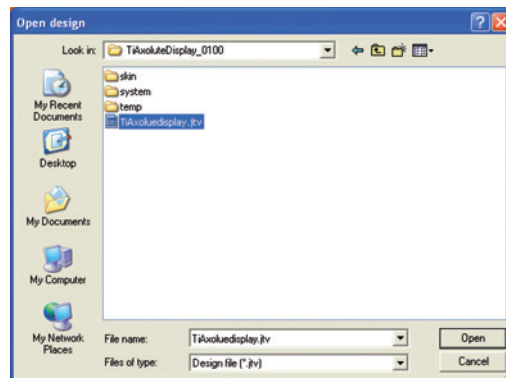
3.3. Open design

Can load a previously produced design which was later filed on the PC in the TiAxolutedisplay program. At this point the design can be:

- Edited and saved on the PC (ready for a later Download).
- Edited and then sent to the Axolute Video Display
- Sent to the Axolute Video Display without being modified.

Press the **Open Design** key.

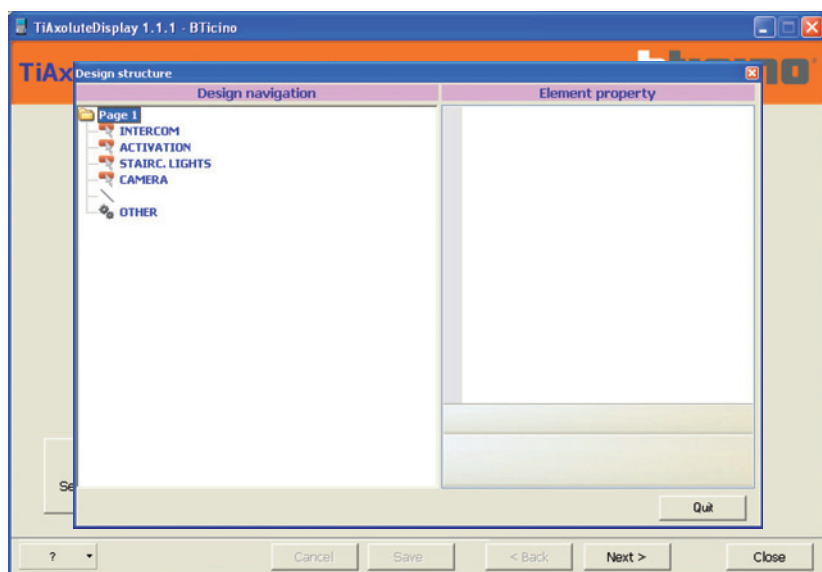
Appears:



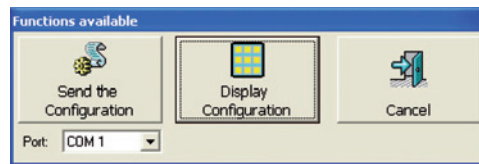
Select the design file (.jtv) form which the design will be imported.

Designs made with the TiAxolutedestation software can also be imported; in this case only the configurations which are compatible with the TiAxolutedisplay will be imported, any non-compatible configurations will be automatically cancelled.

Click on the **Open** push button. A summary screen appears which shows the configuration made so far (if the design has been created with TiAxolutedestation the fields which are not compatible with TiAxolutedisplay will be highlighted in red and automatically cancelled); to close the window click on **Quit**.

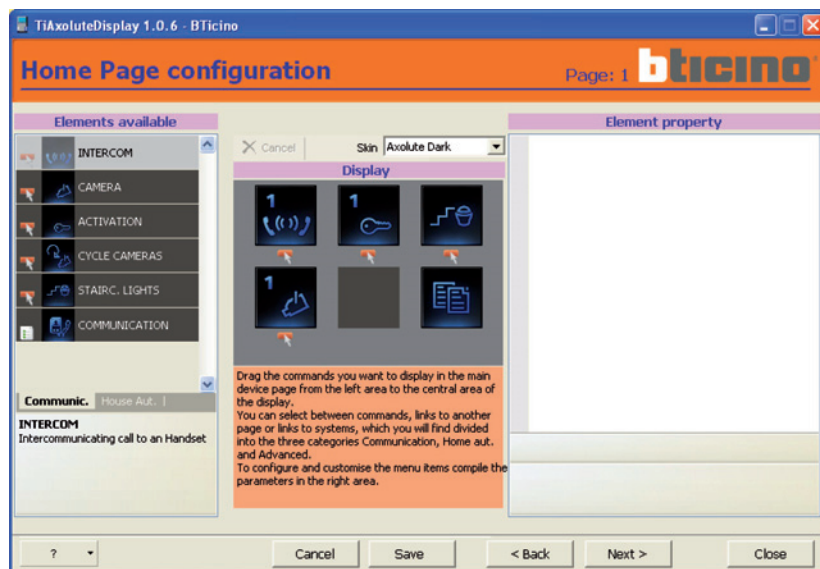


If the design is complete the window appears:



Click on "Send" to send the configuration to the device or on "Display" to display the design.

Click on Next to display the project.



From now on the loaded design can be edited.
The editing modes are described in chapters 4 and 5.

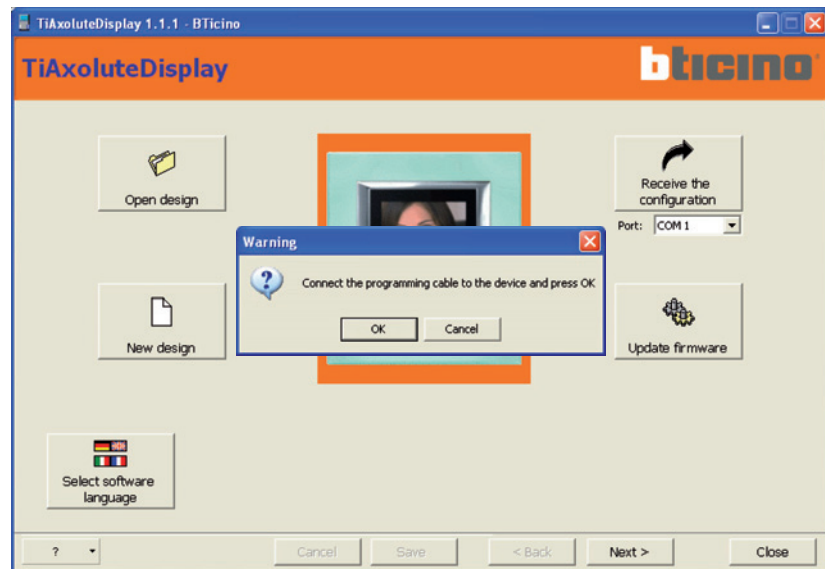
3.4. Receive the configuration

Lets you receive the current Axolute Video Display configuration importing it on a PC for editing.

Execution:

- Connect the Axolute Video Display to a PC as described in section 3.7.
- Click on the "Receive the configuration" push button.

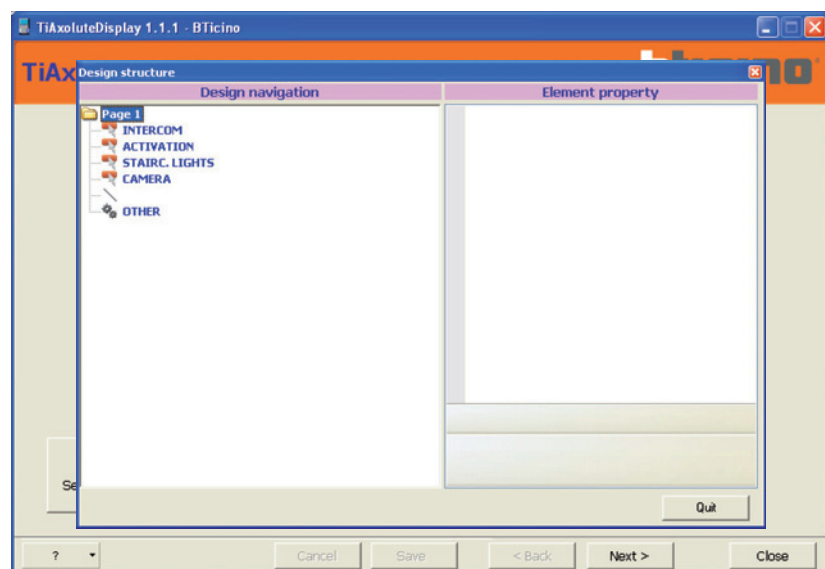
Appears:



After connecting the cable press **OK** to continue.

The program puts the PC in communication with the Axolute Video Display. Wait, the operation may take a few seconds.

Appears:



Once the configuration has been received it can be edited with the procedure described in chapters 4 and 5..

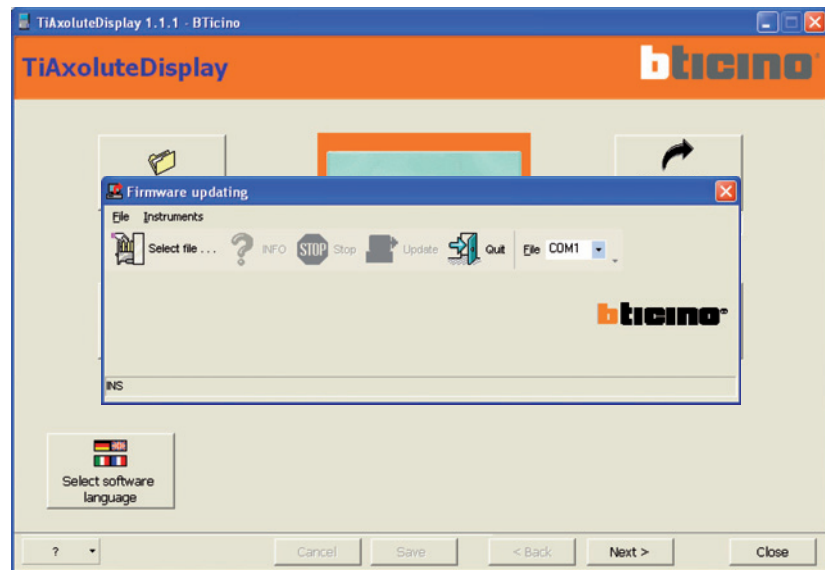
3.5. Update firmware

Lets you update the Axolute Video Display firmware.

Execution:

- Connect the Axolute Video Display to a PC as described in section 3.7.
- Click on the "Update firmware" push button.

The **download firmware** program window appears which is used to download the firmware in the Axolute Video Display.

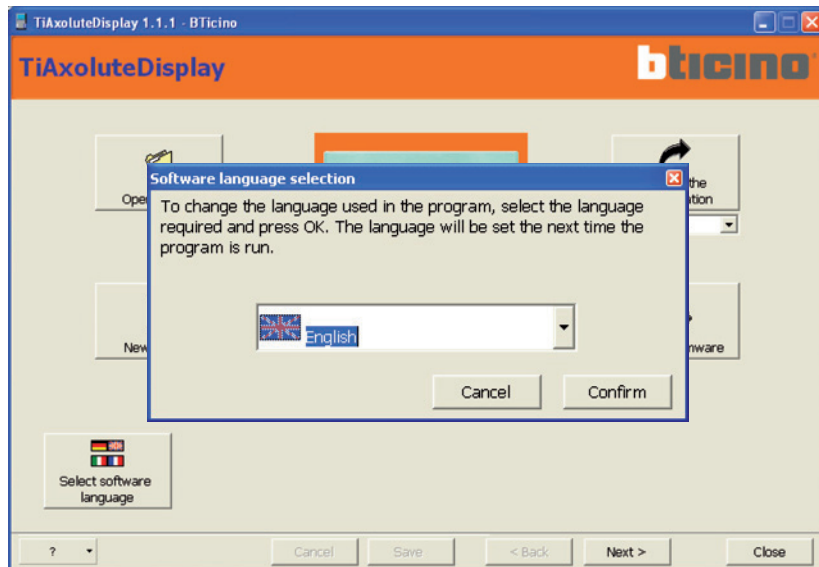


- Click on the program's **select file** icon and select the **.fwz** file to be installed.
- Click on the **Info** push button for information on the differences between the new firmware and the previous versions.
- Click on update to download.

3.6. Selecting the software language

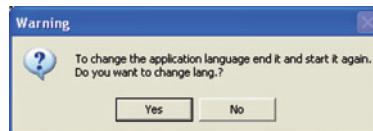
This can select the TiAxolutedisplay software language of use.

On clicking on the “Software language selection” push button the following screen appears:



If you do not want to change the software language click on the **Cancel** push button. If you want to change the language, select the language required by clicking on the button corresponding to it and then press the **Confirm** push button.

The following message will ask you to confirm the selection:



On confirming the selection, the software will be ended and then you can use TiAxolutedisplay again starting normally.

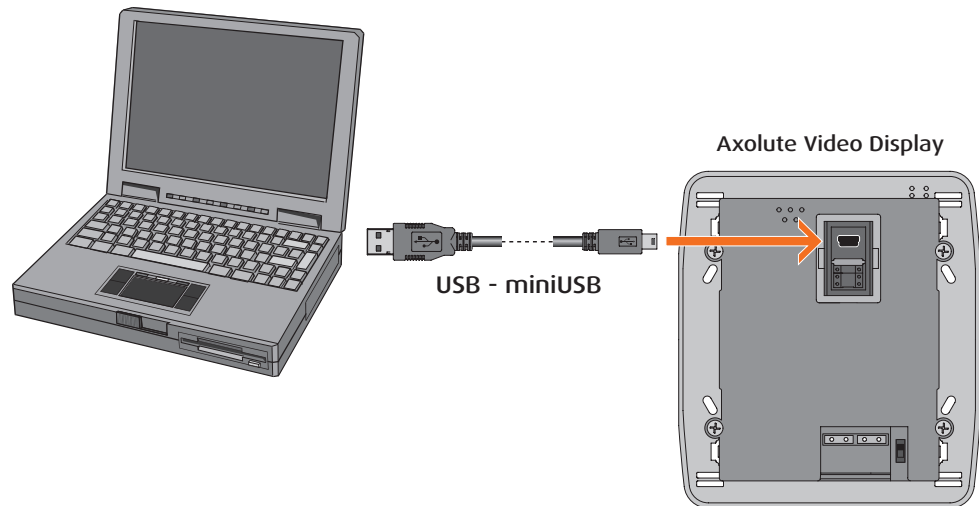
When run again the software will use the language selected in the previous session.

3.7. Connecting the Axolute Video Display to a PC

To **“Send the configuration”**, **“Receive the configuration”** and **“Update firmware”** first of all the Axolute Video Display must be connected to a PC, making sure that the correct port has been selected.

The operation should be performed as indicated below:

Use a USB cable, connecting it between the device’s miniUSB connector and the PC’s USB port.

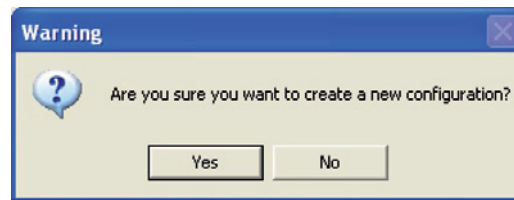


The Axolute Video Display must be connected to the BUS and switched ON for the communication to take place.

The **new design** and **open design** functions can be used without connecting the PC to the Axolute Video Display.

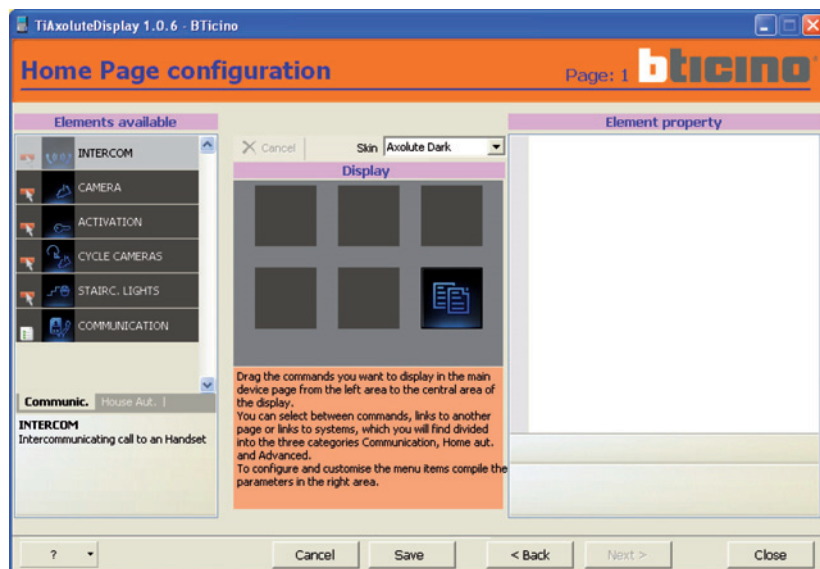
4. New design

Clicking on “New Design” you are asked to confirm your choice



4.1. The first page

After confirming the following configuration page appears



The page is divided into three frames:

- The **Elements available** area, at the left, contains the available functions.
- The **Display** area, in the centre, shows the screen which will be displayed on the Axolute Video Display.
- The **Element property** area, at the right, where the names can be customised and the parameters for the various functions entered.

4.2. The Elements available area

In this area it is possible to choose the functions to enter in the Axolute Video Display menu. The functions are grouped in three categories: Communication, House Automation and Advanced.

When configuring the design you can move from one category to another as required by clicking on the corresponding name.



On selecting a function a brief description is given in the lower part of the frame.



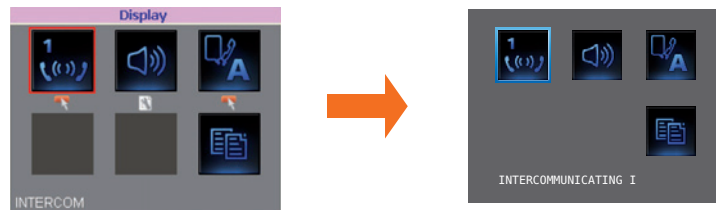
To enter a function in the design just click on it and, keeping the mouse key pressed, drag it to the **Display** area.

4.3. L'area Display

The display area shows the Axolute Video Display menu setting.

The first screen corresponds to the main menu page.

This page is made up of 6 lines. The first 5 can be customised while the last line is OTHER (this cannot be customised or cancelled).

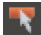




To continue with the configuration enter at least one function.

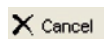
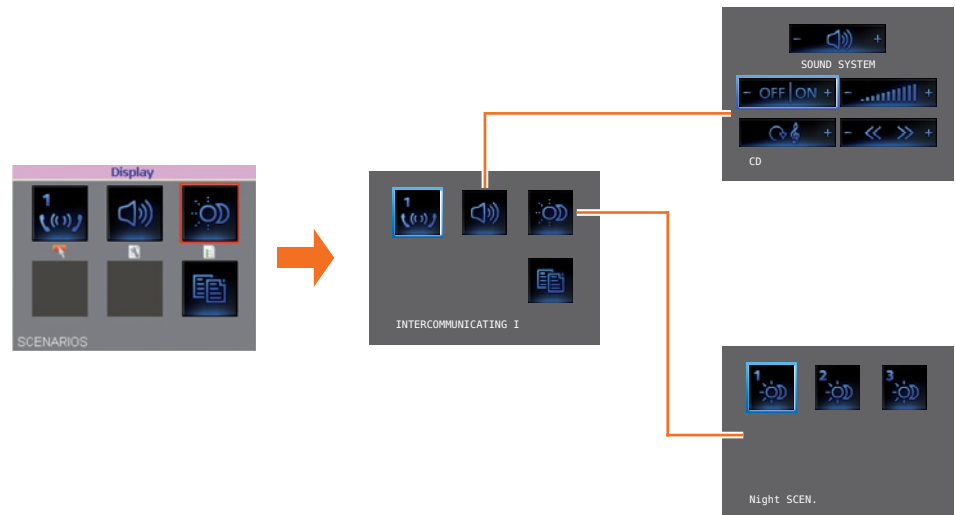
There is no need to configure all the lines. Also, if you want to enter, for example, only three functions, they can be placed where you like without having to use the lines from top to bottom.



Three types of function can be entered in the main page, the icon next to them indicates the type:

-  Single function
-  Connection to a page; the configuration must be made in the next design phase (see scenario example on pages 21 and 22).
-  Connection to a page; if the configuration is required it must be made directly in this screen (see sound system example on page 20).

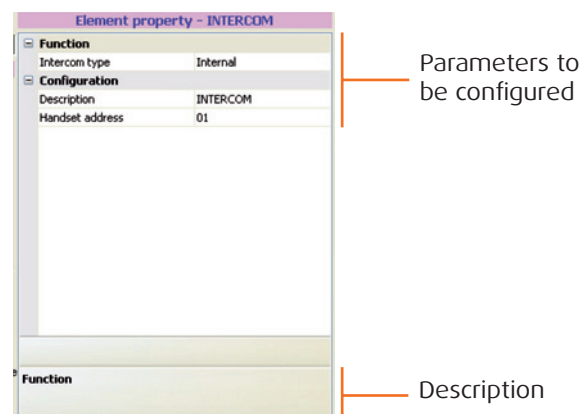
If  or  functions are entered, the Axolute Video Display menu will be made up on two levels:



To cancel a Display area function click on it and then on the Cancel key.

4.4. The Element property area

All the functions dragged into the Display area must be configured.
After selecting the function the parameters to be configured will appear in the Element property area.
In this case the "Description" field can be renamed to make it more intuitive (e.g. "call kitchen" instead of Intercom).
On clicking on the fields to be configured a brief description is given in the lower part of the frame.

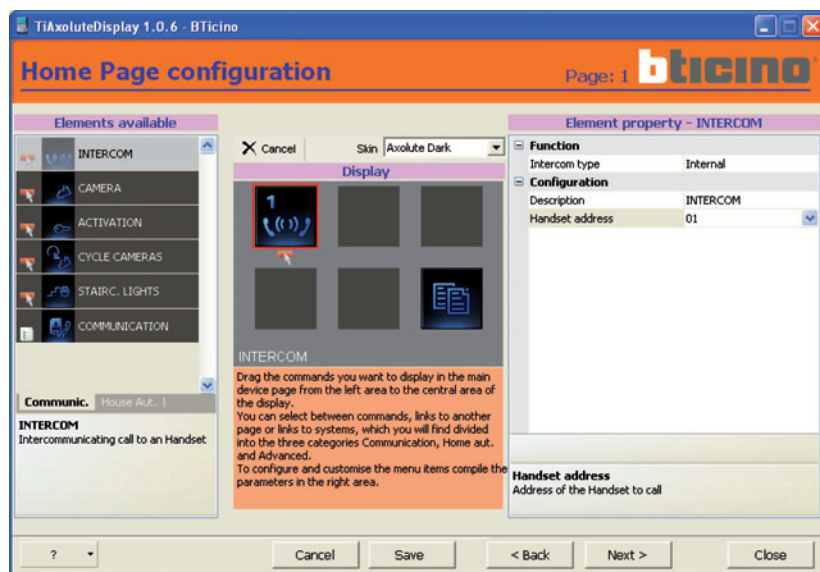


5. Design creation procedure

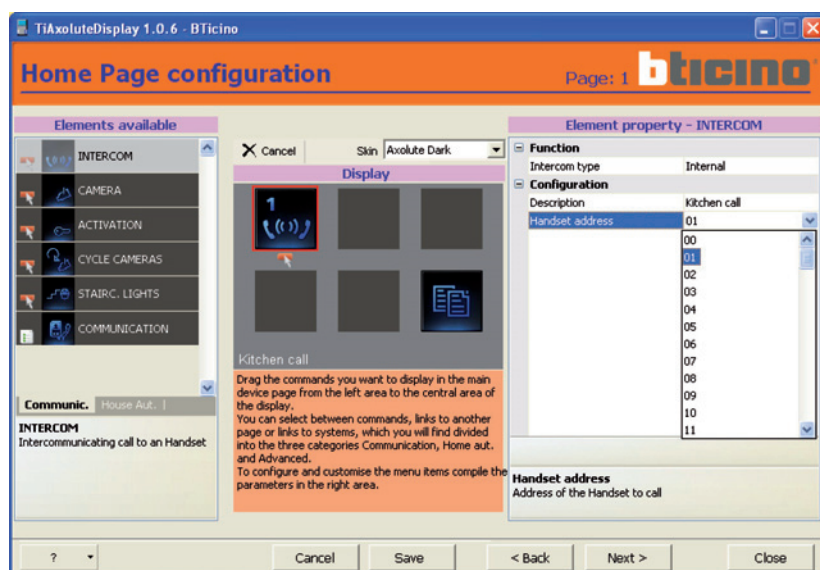
This chapter presents a design example; the example is for programming the Intercom, Sound System, Scenario and Alarm functions. These functions have been chosen because they represent the various possible configuration types.

1st Passage

Drag the Intercom function inside the Display area

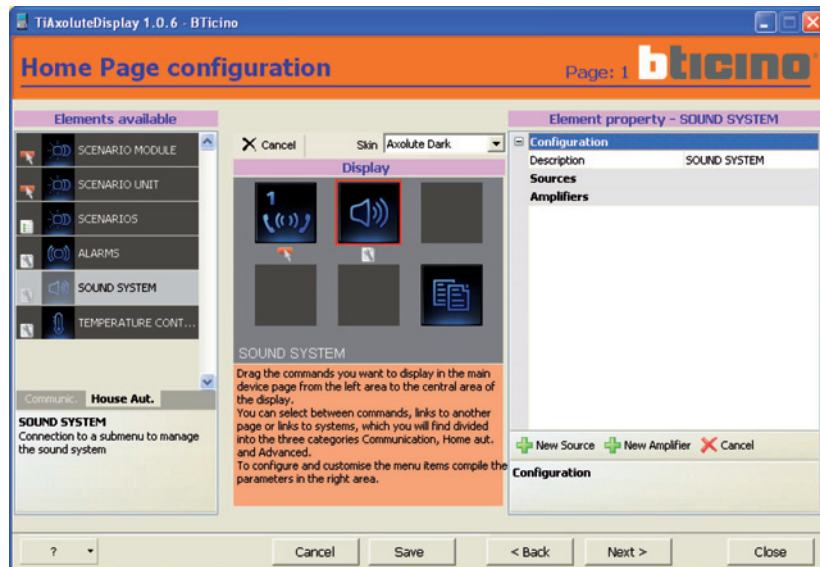



In the Element parameters area configure the address of the Handset to which the call refers and if you want customise the description.




2nd Passage

Click on House Automation; drag the Sound System function inside the Display area.

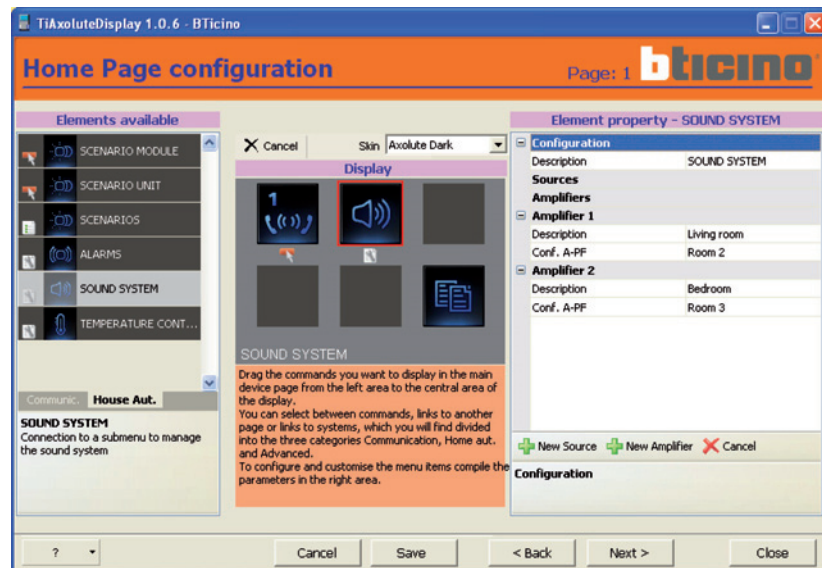


In the Element property area by clicking on the  key you can enter up to four sources and customise the description.



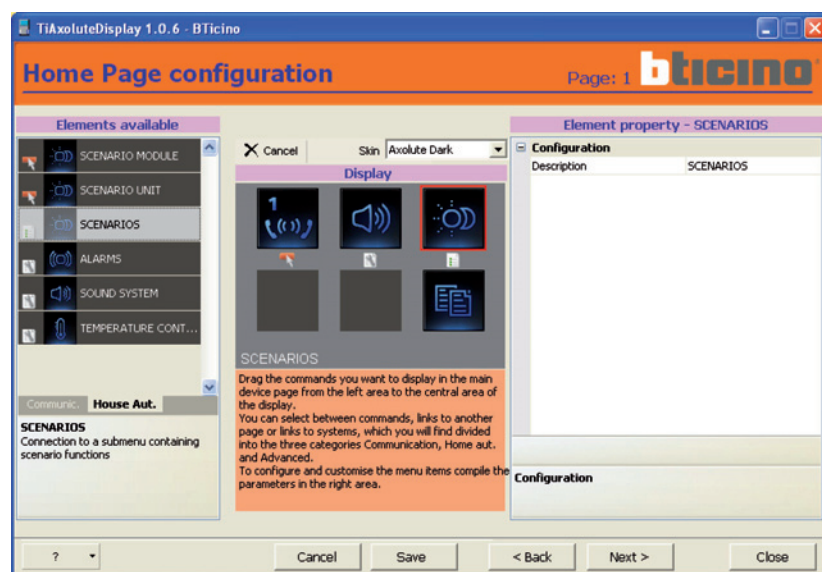
Clicking on the  key enter the Sound system amplifiers (max. 6) which the device should control.

For each amplifier configure the A-PF address and customise the description.



3rd Passage

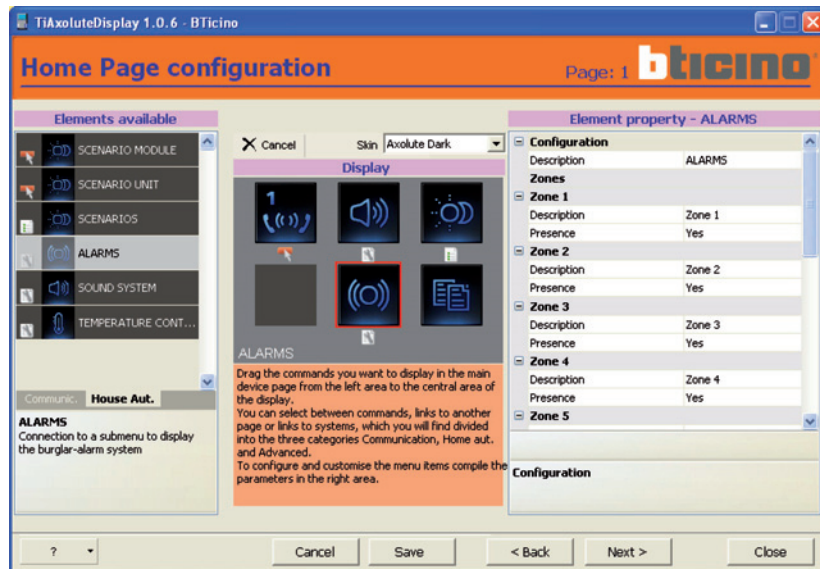
Now drag the Scenario function inside the Display area



The description can be customised in the Element property area; the scenarios can be programmed in the next page.

4th Passage

Now drag the Alarm function inside the Display area.

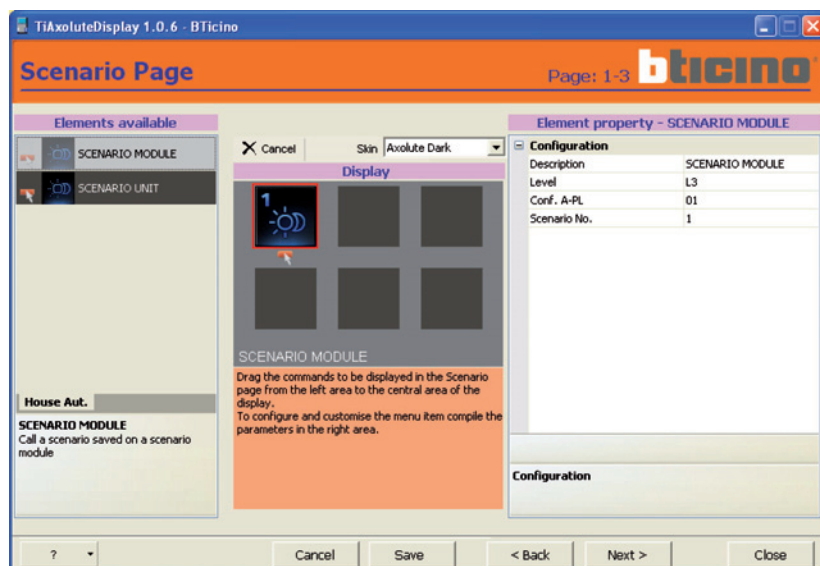


The zone description can be customised in the Element property area and you can specify whether they are present in the system; no other configurations are necessary because the Axolute Video Display takes the information directly from the burglar-alarm system control unit.

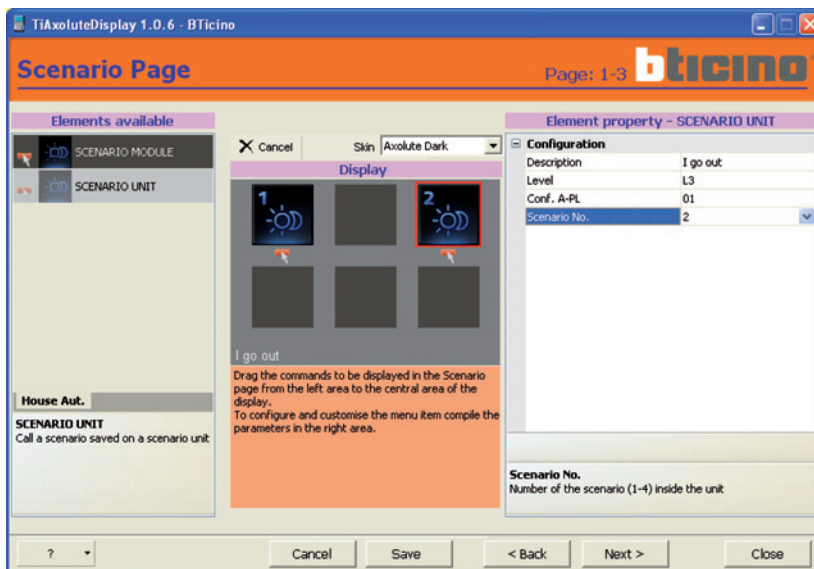
5th Passage

Click on the **Next >** push button to move to the next page.

Drag Scenario module or Scenario unit inside the Display area (max. 6) as required.



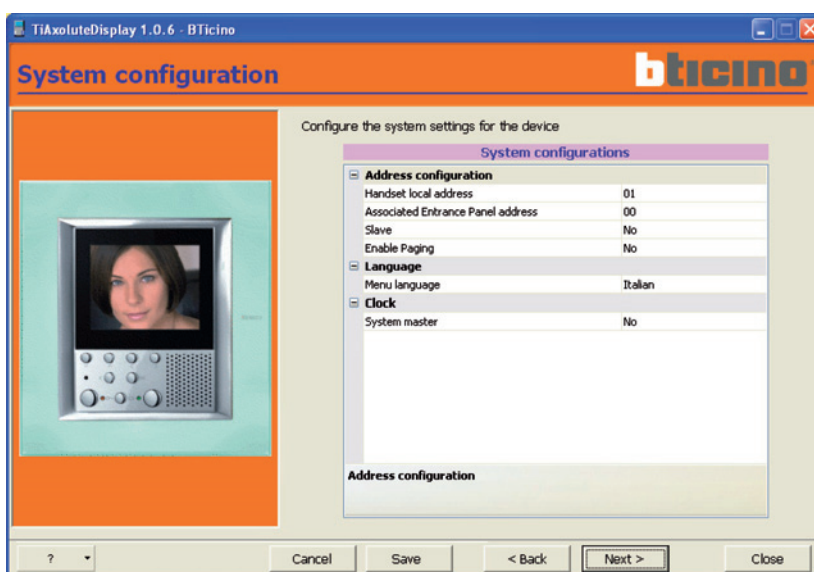
In the Element parameters area configure the scenarios and customise the description.



Click on the **Next >** push button to move to the next page.

6th Passage

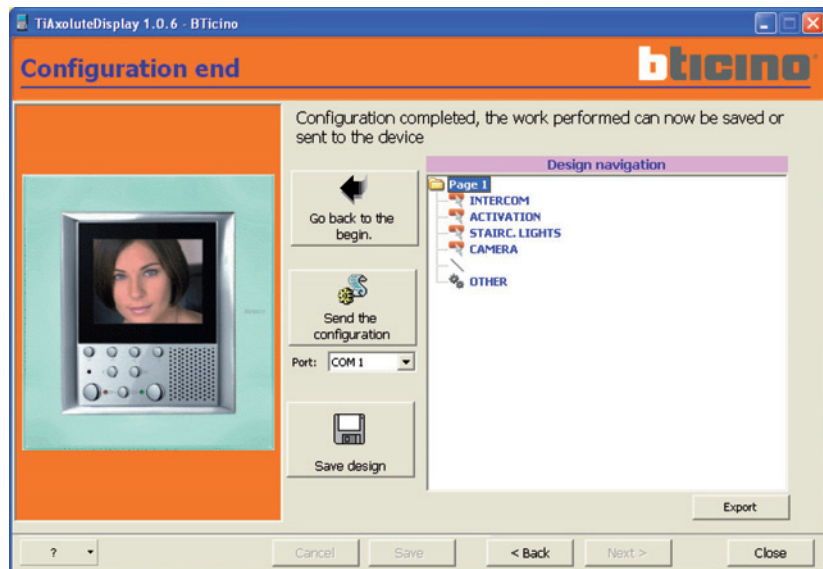
The Axolute Video Display configuration page will appear.



Configure the Axolute Video Display parameters (see Installation manual).

7th Passage

Finally, after clicking on  again the last page appears.



The diagram of the created design will be displayed in the Design Navigation area.

At this point four operations can be performed:

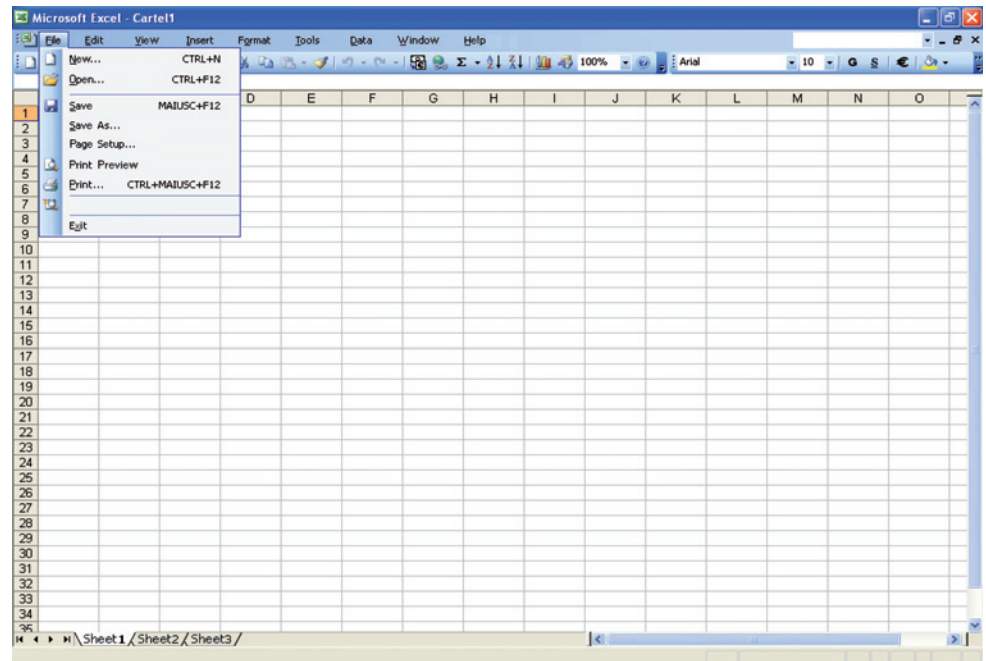
- **Go back to the beginning:** the confirm operation request appears. To continue click on YES. If the design has been saved you will go back directly to the beginning, otherwise you will be asked to save it. If you decide not to save it, the current design will be lost.
- **Send the configuration:** sends the configuration to the Axolute Video Display directly.
- **Save design:** saves the created design on the PC.
- **Export:** the configuration can be exported into a file with .csv extension, which can be imported in Microsoft Excel following the procedure described below.

6. Importing files exported from TiAxolutedisplay into Microsoft Excel®

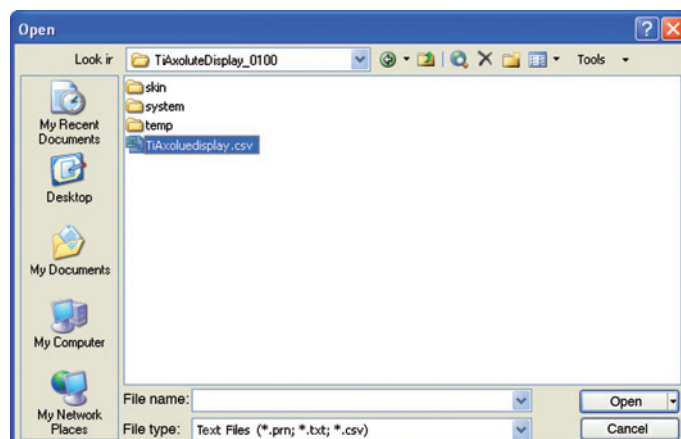
Use Microsoft Excel® (ver. 2000 or later, the correct display is not guaranteed for previous versions) to display the files exported from TiAxolutedisplay (.csv).

Proceed as follows to export the files:

- Open the application
- From the “File” menu select “Open”



- The window shown below will open



- In the “File type” box select “Text file”
- Select the .csv file to be imported and then click on “Open”

- [illegible]



Bticino SpA
Via Messina, 38
20154 Milano - Italy
www.bticino.com