



AXOLUTE VIDEO DISPLAY

349311-349312-349313

Description

2-wire speaker phone video handset for flush mounted installation. With 2.5" colour LCD display with PC customisable OSD navigation icon menu for the management of the following MY HOME applications: video door entry system, temperature control, sound system, automation (scenarios) and anti-intrusion. LED signalling for: call exclusion, door status, and connection to the entrance panel.

Suitable for flush mounted installation using item 506 boxes. To be completed with front cover plate (all those suitable for item 506E of the AXOLUTE series).

Programming and configuration using the TiAxoluteDisplay software supplied with the product.

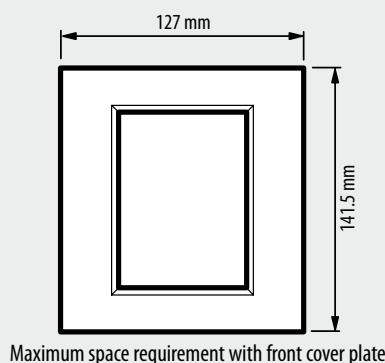
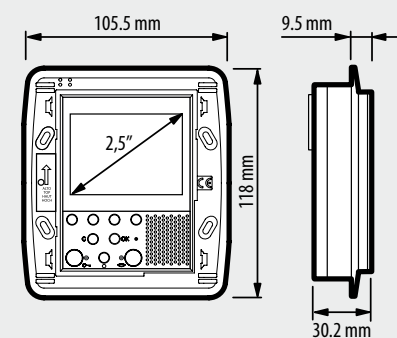
Related items

item 506E	3+3 modules flush mounted box
item PB526	3+3 modules plasterboard box
item HA/HB4826...	3+3 modules front cover plate (see AXOLUTE finishes)
item 349319	VIDEO DISPLAY table-top base

Technical data

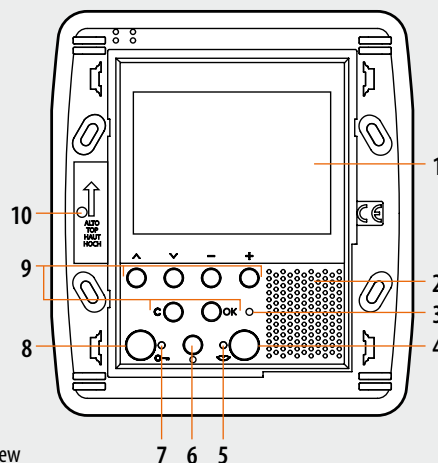
Power supply from SCS BUS:	18 – 27 Vdc
Stand by absorption:	10 mA
Max. operating absorption:	320 mA
Operating temperature:	5 - 40°C

Dimensional data



Maximum space requirement with front cover plate

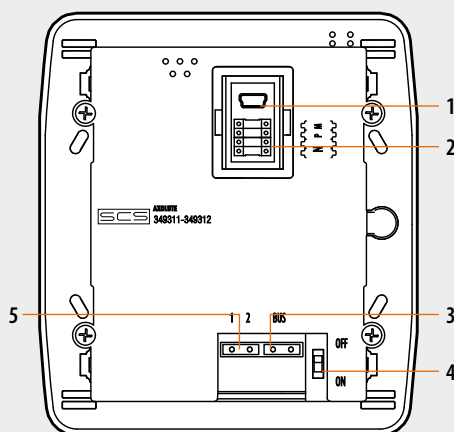
Front view



Legend

- 1 - 2.5" colour LCD display
- 2 - Loudspeaker
- 3 - LED for call exclusion notification
- 4 - Connection key; enable/disable the connection
- 5 - Connection status LED
- 6 - Entrance panel and cycling activation key
- 7 - Door lock status LED
- 8 - KEY Door lock opening
- 9 - Navigation keys and confirmation inside the menu
- 10 - Microphone

Rear view



Legend

- 1 - Mini-USB connector for PC connection
- 2 - Configurator socket
- 3 - 2 WIRE SCS/BUS connection clamps
- 4 - Line termination ON/OFF micro switch
- 5 - Clamp for connection of the additional power supply

Configuration

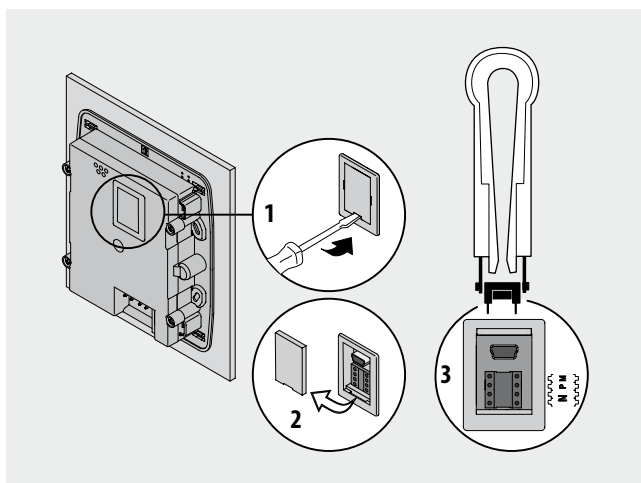
AXOLUTE VIDEO DISPLAY can be configured in 2 different modes:

- **Fast configuration** (through the connection of physical configurators)
- **Advanced configuration** using the TiAxoluteDisplay software supplied with the product.

Fast configuration enables the user to access the menu of the video door entry functions. This is the standard configuration using configurators to be connected to the appropriate sockets on the back of the device itself.

If the apartment interface, item 346850, is installed in the apartment, configuration of the video handset using the software supplied is recommended.

WARNING: The configuration of the device is performed using configurators and cannot be changed from the menu.



N - numero del Handset

The N configurator assigns each video handset an identification number within the system. The handsets must be configured in progressive mode. Handsets with parallel connection (max 3 are allowed inside the apartment without item 346850) must be configured with the same N configurator. Additional audio handsets, video handsets and/or bells can be installed in parallel to the basic video handset.

P - entrance panel association

The P configurator identifies the associated EP, or the first entrance panel that switches itself on when the pushbutton (○) is pressed the first time, as well as which door lock with idle video handset is activated, when the pushbutton (○) is pressed.

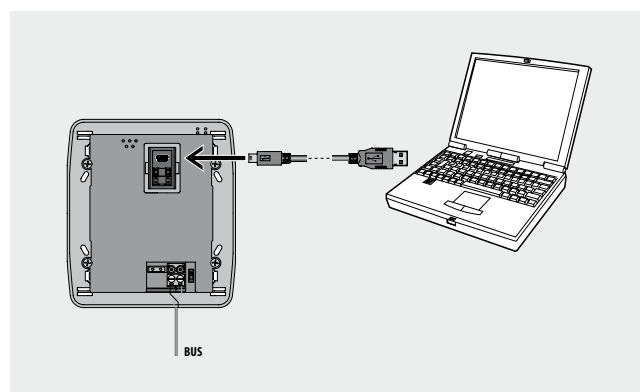
M - Operating mode

The M configurator identifies the main menu of the device and therefore all the usable functions (see manual supplied with the product).

The advanced PC configuration using the TiAxoluteDisplay software (CD supplied), provides the user with a higher degree of customisation, with the possibility to:

- create customized menus;
- customize text messages;
- access all home automation functions.

To transfer the configuration performed using the TiAxoluteDisplay software, or to update the firmware, connect AXOLUTE VIDEO DISPLAY to the PC using an USB-miniUSB cable.



To ensure that the communication is successful, AXOLUTE VIDEO DISPLAY must be powered and not physically configured.